



Pump specifications:

Type.....	BV150 D275
Max. flow	500 m ³ /hour (2200 US GPM)
Max. pressure	42 mwc (138 ft.)
Connections.....	DN150 (6")
Solids handling	80 mm (3.15")
Impeller type	Semi-open impeller
Priming system	BBA MP100
Engine	Hatz 4H50TICD
Emission level.....	Stage V
Canopy	M10-23
Sound level.....	Approx. 62 dB (A) at 10 m
Dry weight.....	1950 kg (4290 lbs.)

FEATURES

BV auto prime pump

The BV range of pumps has been designed with a clear focus on reliability and durability. Featuring a 100% mechanical priming system, the BV series pumps quickly prime and re-prime, even from dry conditions. The heavy build style of both pump and frame make the BV range perfect for use in the strenuous drilling market.

World-class performance

The BV range is built to be deployed on the most demanding drilling and bentonite applications. Using high efficiency pumps and state-of-the-art diesel engines, the pumps offer maximum performance at minimal cost, fully in-sync with the company philosophy of "Lowest cost of ownership".

Key features

- Robust pump design
- Extensive flushing system
- 100 m³/h oil-spill free priming system
- Easy clean floating boxes
- Large inspection covers for easy access

Complete package designed & built by BBA Pumps

- Complete in-house design & production
- Over 60 years of experience in the market
- Complete testing facility in-house
- Contemporary & functional design
- Durable & eco-friendly materials
- Custom builds available

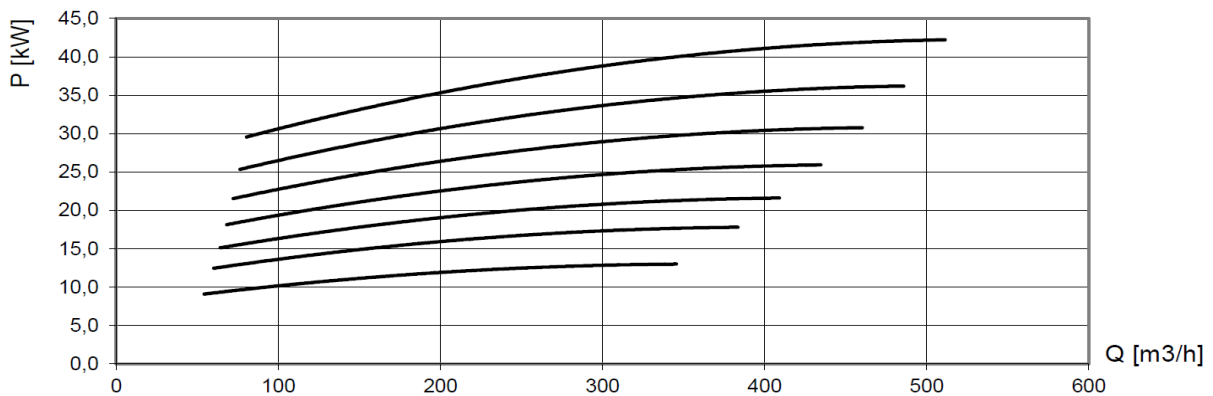
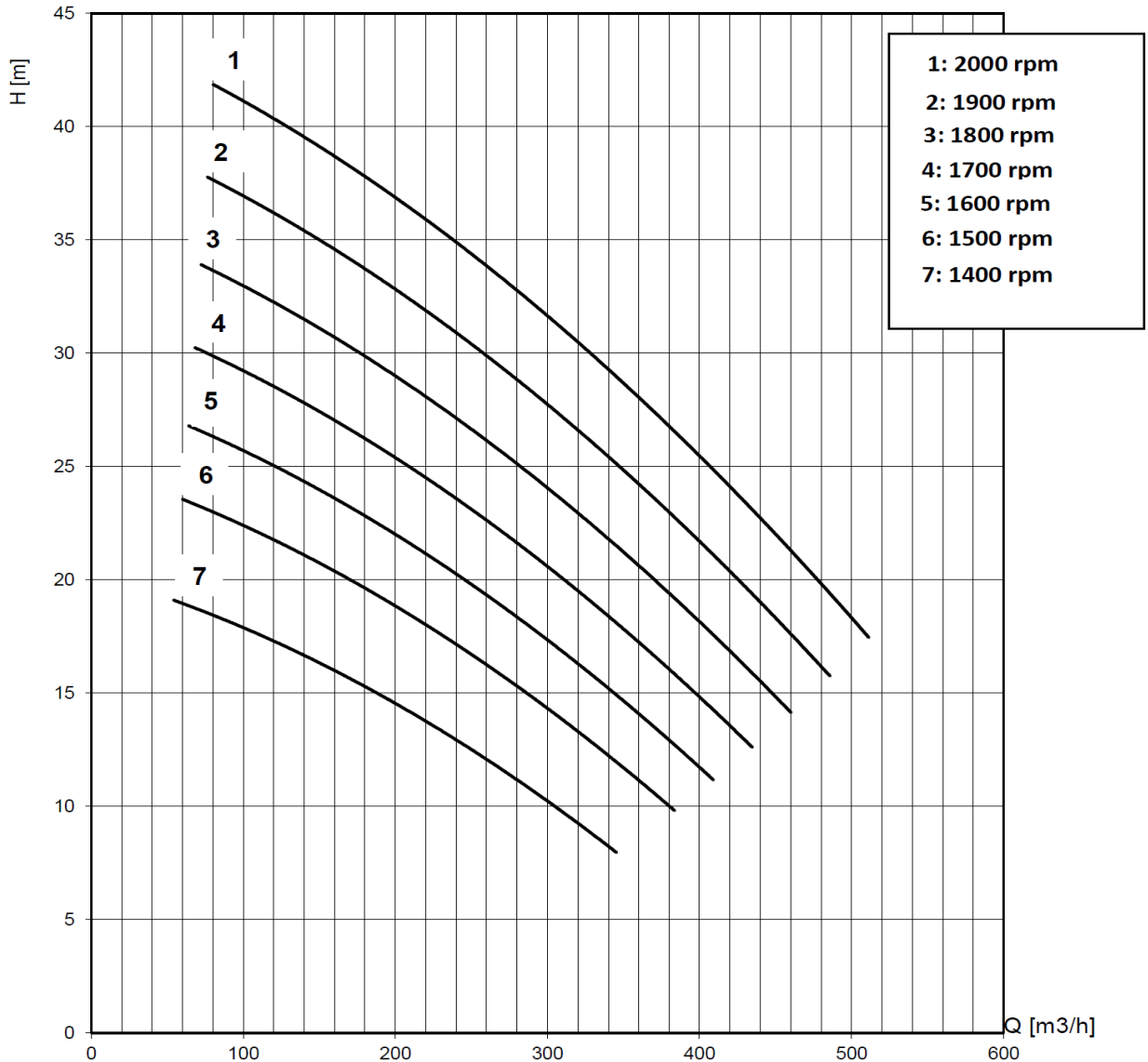
After sales service & product support

- Single supplier for parts, spares & accessories
- Dedicated customer help-desk (24h service)
- Dedicated service department in-house
- Global parts distribution network
- Optional global on-site servicing available
- Extensive training options available (technical & commercial), on-site or in-house



PERFORMANCE CURVES (various speed)

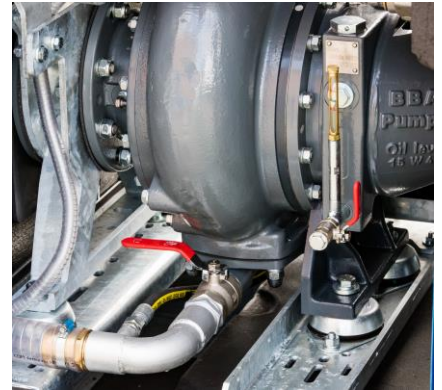
Continuous duty according ISO 9906 – fluid density: 998.3 kg/m³



STANDARD TECHNICAL SPECIFICATIONS

BBA auto prime pump

Pump type.....	BV150 D275
Max. flow.....	500 m ³ /hour (2200 US GPM)
Max. head.....	42 mwc (138 feet)
Impeller type.....	Semi-open impeller
Solids handling.....	80 mm (3.15 inch)
Pump casing.....	Cast iron GG20
Impeller.....	Chrome Moly 42CrM04
Wear plate.....	Chrome Moly 42CrM04
Pump shaft.....	C45
Shaft seal.....	Mechanical seal
Seal faces.....	Tung/Tung
Seal rubbers.....	Viton



BBA priming system

Pump type.....	BBA MP100 Diaphragm pump
Air handling capacity.....	100 m ³ /h (59 CFM)
Max. vacuum.....	8.5 m (29 inHg)
Drive.....	Toothed belt (continuous drive)
Float boxes (2).....	"Easy clean" hot dip galvanised
Non return valve.....	Cast iron GG25
Check valve disc.....	Buna-N



Engine

Engine brand.....	Hatz
Engine type.....	4H50TICD
Max. power IFN.....	55.4 kW (75 Hp)
Variable engine speed.....	1300 - 2000 RPM
Fuel consumption.....	210 g/kWh
Displacement.....	1,952 cm ³
Number of cylinders.....	4
Aftertreatment.....	EGR, DOC, DPF
Emission level.....	Stage V

BBA control panel LC30

- Auto start/stop system
- Two float switches included (10m cable)
- Switch Manual-0-Auto
- RAMP-UP/DOWN function
- Rpm. control with push buttons
- Warning lights
- 4.3" LCD monitor

The LCD monitor displays additional engine data, e.g. actual engine speed, working hours, battery voltage, fuel consumption and failures in clear text (10 language support)



Fuel system

- Composite fuel tank 300 L (80 US Gallon)
- Fuel tank cap Ø 100 mm (4 inch)
- Electronic fuel injection system

Electrical system & safety features

- Nominal voltage 12 Volt
- Premium quality battery
- Low oil pressure shut down

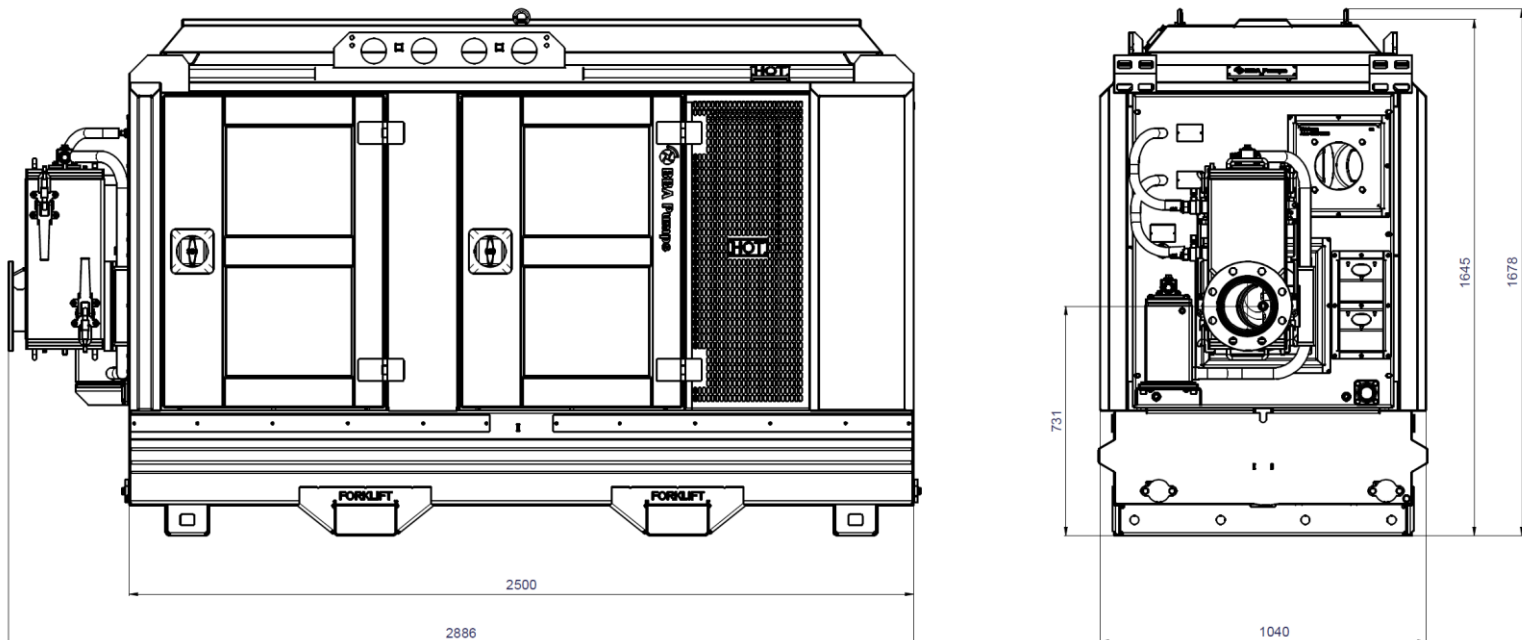
CANOPY M10-23

BBA sound attenuating canopy

- Canopy type.....M10-23
- Dimensions L x W x HL x W x H mm
- Dimensions L x W x HL x W x H inch
- Basic frame.....Hot dip galvanised
- Doors4 easy-access composite doors (lockable)
- Front panel.....Steel hot dip galvanised
- Fuel tank.....PE net 300 ltr (80 US Gallon)
- Fuel tank autonomy25 hours (at 2000 rpm BEP)
- Fuel tank cap100 mm (4 inch)
- Forklift pockets.....Fitted with 2 forklift pockets
- Lifting pointFitted with lifting points
- Connections.....Please consult “auxiliary items” in overleaf
- Exhaust systemFully integrated in canopy
- Additional.....Fitted with oil-water separator
- Documentation box.....BBA user manual and warranty book

BBA E-lift® system

The M10-23 canopy has been fitted with the BBA E-lift® system. By removing the roof panel, the pump and diesel engine as a whole can be removed from the canopy effortlessly allowing easy preventative maintenance on the pump and diesel engine. In addition, as the canopy is not fitted with padding or insulation materials, it can be cleaned quickly using a pressure washer.



Actual dimensions (in mm) may vary depending on selected quick



Central flushing system
The BV series comes standard with a central flushing system to keep your sludge pump in optimal condition.



Double vacuum pump
Diaphragm pump, water-resistant and oil-spillage free. Air capacity of 100 m³ per hour.



Inspection
Oil glasses, drain valves and fill plugs are all easily accessible.



“Easy clean” floating boxes
Two fully galvanised floating boxes with stainless steel floaters are easy to clean after the job is done.



Large inspection covers
Easy access to suction spool, impeller and non-return valve.



Safety
Extremely durable and lockable T-locks offering perfect grip.

Pictures used are for illustration purposes only.